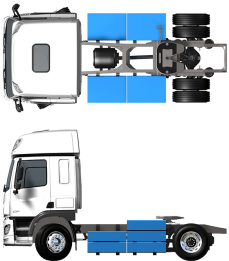


Specification sheet

CF Electric

FT 4X2 Tractor, Battery Electric Vehicle



ENGINES
Performance 210 kW, peak 240 kW
Torque, 2000 Nm, peak 3800 Nm

GVM ¹⁾	GCM ²⁾
20500 kg	37000 kg
Max. front 8000 kg	
Max. rear 13000 kg	

991G7700AAAA - 202101 - 23-09-2020

DAF Trucks N.V., The Netherlands, www.daf.com

CAB EXTERIOR

Sleeper Cab with galvanised steel bumper, tinted glass and electric window openers. Main mirrors and wide angle mirrors electrically heated. Cab width 2300 mm.; LED daytime running lights; Electrically adjustable mirrors; Front view mirror.

Optional

01137 Space Cab	09983 Fog lights
01226 Cab suspension air	09984 Fog lights and cornering lights
01174 External sun visor green translucent	06593 Skylights
00847 Air horns, single set	06628 One hazard beacon light at co-driver side
09006 Air horns, double set	06627 One hazard beacon light at driver side
08070 Halogen head lights	06629 Two hazard beacon lights

AERODYNAMICS

Optional

07840 Adj. roof air deflector, wide, for Sleeper Cab	06776 Adjustable roof air deflector
07841 Adj. roof air deflector, wide, for Space Cab	04906 Side collars

COLOURS

Cab colour H3279 Brilliant White; Head lamp panel and bumper: Brilliant White; Chassis colour grey..

Optional

06485 Head lamp panel and bumper: cab colour	09933 Head lamp panel and bumper: Stone Grey
---	---

CAB INTERIOR

Cab interior trim colour Dark Sand; Cab interior decoration Black Rock; Driver seat: Comfort Air; Co-driver seat: basic; Lower bunk, normal level; Automatic Temperature Control and airco; Roof hatch aluminium, manual control; Pollen filter.

Optional

09271 Steering wheel, leather, colour black	07743 Co-driver seat: Luxury Air
07240 Steering wheel, leather, Exclusive	07746 Co-driver seat: Super Air
07152 Cab interior trim colour Exclusive	07748 Co-driver seat: Xtra Leather Air
07592 Cab interior decoration Argenta	00967 Seat belts red
07591 Cab interior decoration Rustica	06539 Refrigerator
07733 Driver seat: Luxury Air	06784 Lower bunk mattress Xtra Comfort
07736 Driver seat: Super Air	06676 PL light in cab ceiling
07737 Driver seat: Xtra Leather Air	06970 Automatic Cab Climate Control
07741 Co-driver seat: Comfort Air	

COMMUNICATION AND DRIVING MANAGEMENT

Tachograph digital, Stoneridge 1C; Speed limiter setting 85 km/h; Antennas: AM/FM, 2x GSM, GPS; Cruise Control with FCW and AEBS.

Optional

09681 Preparation for Maut	01100 Truck Navigation Radio, 6 speakers
08450 Luxury speaker system with 6 speakers	07261 TruckPhone
07117 Radio/USB player, 2 speakers	09908 Cruise control

SAFETY AND SECURITY

Lane Departure Warning System; Vehicle Stability Control (VSC); Basic engine immobiliser system.

Optional

08631 Air bag (driver) and 2 seat belt tensioners	09827 Side camera system
09828 Front camera system	01725 Reverse warning

SUSPENSION AND AXLES

Front axle load 8.00 t; Rear: 13.00 t, air suspension, HR1356.

Optional

06257 Front axle load 9.00 t	08191 Axle load monitoring
04647 Front springs air	

WHEELS AND TYRES

Front axle 1: 315/70R22.5; Rear axle 1: 315/70R22.5; Disc wheels steel, silvergrey; Wheel protection rings silvergrey.

Optional

16152 Tyre makes and types

DRIVELINE

E-Engine SiemensPerformance 240 kW, specific 210 kW. Torque 3800 Nm max., nominal 2000 Nm; Rear axle ratio 7:21

BRAKE SYSTEM

Park brake control with test position; Ventilated disc brakes front and drum brakes rear. Dual circuit air system with electronic control (EBS). Twin cylinder air compressor with heated dryer and economy mode..

Optional

04901 Spring brake cylinders on the first front axle

CHASSIS

Wheelbase 3.80 m / rear overhang 0.99 m; Side member height 260 mm; Standard component location; Rear mudguards; Worklamp LED; Spray suppression; Front underrun protection (FUP); Catwalk with step.

Optional

08641 Air tanks aluminium	06306 Two wheel chocks
01470 Worklamp white	03322 Rear light with bulbs
03624 One wheel chock	

DRAWBAR AND TRAILER EQUIPMENT

Fifth wheel Jost type JSK42C, cast iron, height 150 mm with 40 mm mounting plate. King pin diameter 2 inches, D-value 152 kN, maximum vertical load 20 tonnes.; Fifth wheel KA dimension 670 mm; Pneumatic trailer connection palm type; Electric connection 24 V / 2x7 pins.

Optional

03178 Towing hook D= 4.3

ELECTRICAL POWER SUPPLY

Battery Lithium Ion 315 kWh effective..

GVM AND GCM

Chassis weight related technical GVM max 20500 kg; Driveline related max GCM 37000 kg class 3.

SERVICE AND MAINTENANCE

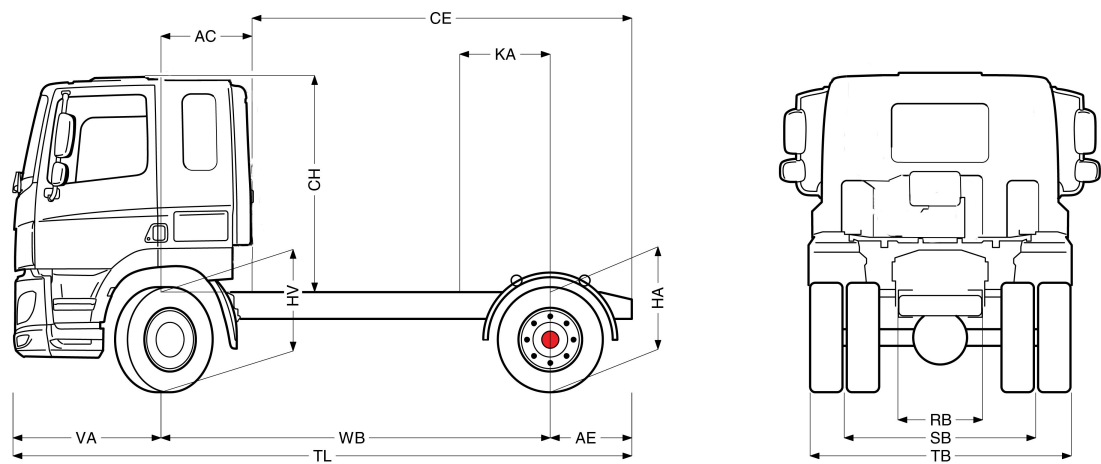
Standard Warranty takes care of 1 year complete vehicle, 2nd year driveline and 1st year breakdown.; ITS service.



Go to [DAF.com](https://www.daf.com) to configure your own perfect DAF.

CF Electric

FT 4X2 Tractor, Battery Electric Vehicle



SLEEPER CAB	Wheelbase - AE		Unladen weight ¹⁾			Gross Carrying Capacity			Variable dimensions								
	WB	AE	Front	Rear	Total	Front	Rear	Total	AC	CE	CH ⁶⁾	KA ⁷⁾	TL	HA ⁸⁾	HA ⁹⁾	TK ¹⁰⁾	TW ¹¹⁾
	3.80	0.99	5250	3735	8985	2750	9265	12015	0.82	3.97	1.99	0.67	6.16	0.97	0.94	13.50	14.85
SPACE CAB	WB	AE	Front	Rear	Total	Front	Rear	Total	AC	CE	CH ⁶⁾	KA ⁷⁾	TL	HA ⁸⁾	HA ⁹⁾	TK ¹⁰⁾	TW ¹¹⁾
	3.80	0.99	5360	3735	9095	2640	9265	11905	0.82	3.97	2.67	0.67	6.16	0.97	0.94	13.50	14.85

OTHER DIMENSIONS VA: 1.37 HV¹²⁾: 0.98 HV¹³⁾: 0.96 RB: 0.79 SB: 1.82 TB¹⁴⁾: 2.48

1) GVM in conformity with registration documents.

2) GCM in conformity with registration documents.

3) Axle load with standard tyre size.

4) Chassis and cab weight calculated with: Standard specification items without driver, tolerance $\pm 3\%$. Changing of the specification can have major impact on vehicle weight.

6) Cab height is measured from frame member to closed cab roof hatch.

7) Calculate customer specific KA with TOPEC.

8) Unladen height at centre of driven axle(s).

9) Laden height at centre of driven axle(s).

10) TK = turning circle between kerbs.

11) TW = turning circle between walls.

12) Unladen height at centre of front axle(s).

13) Laden height at centre of front axle(s).

14) TB is overall width at rear. (At lower cab step 255).

Depending on the vehicle configuration a specific option may not be possible. The availability and specification of this vehicle may differ per country. For further information please contact the DAF organisation. Pictures and technical illustrations are not binding in detail and can differ from the standard specification. Subject to modification without prior notice.